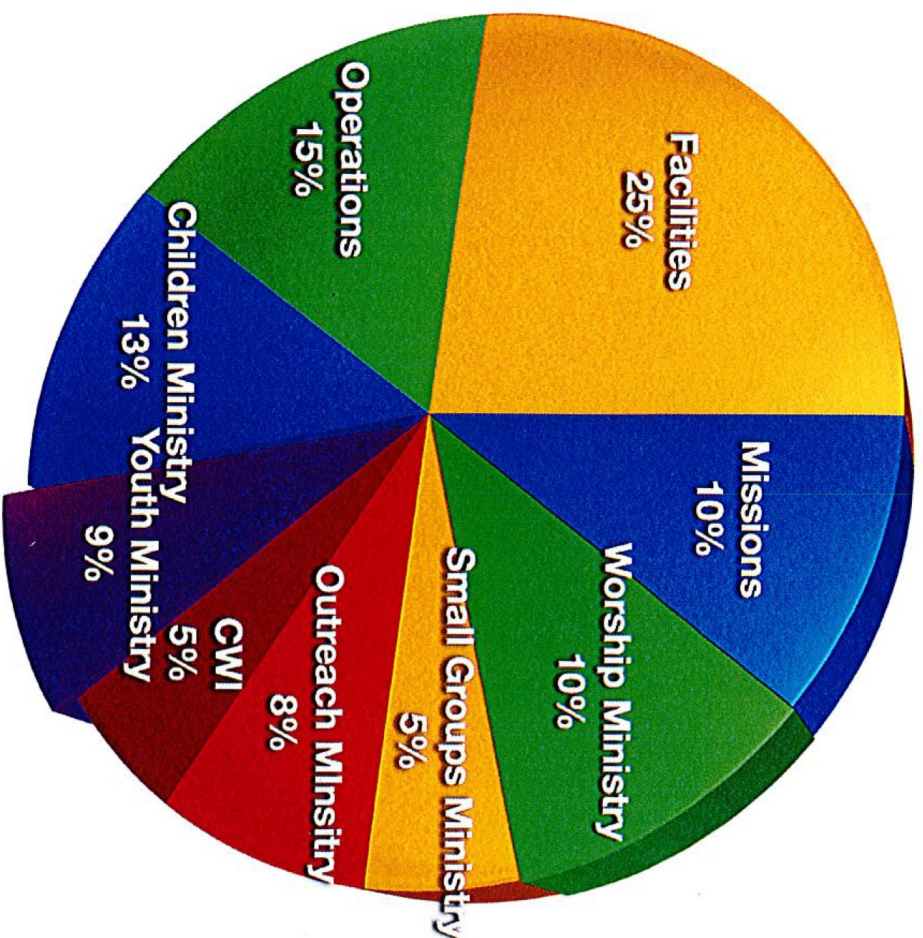


# Stone Ridge Church 2018 Budget



Graph Represents Operational Budget Only  
CWI stands for Church Wide Initiatives

## Operational Budget

● Missions	\$110,840.00
● Worship Ministry	\$113,016.00
● Small Groups Ministry	\$57,049.00
● Outreach Ministry	\$87,549.00
● CWI	\$58,271.00
● Youth Ministry	\$97,472.50
● Children's Ministry	\$138,851.50
● Operations	\$171,525.00
● Facilities	\$273,826.00
<b>Total:</b>	<b>\$1,108,400.00</b>

## Capital Budget

- Includes:
- Auditorium Lighting System
  - Live Video Equipment

**Total: \$17,500.00**